

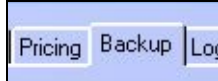
Backup Your Data

We cannot stress the importance of backing up your ezFramer data on a regular basis. Computer crashes, accidental beverage spills, virus'... you name it, it can happen. We have worked with those who never performed a backup once, and when they lost their computer they lost all their customers, work orders, reports, pricing etc... and painstakingly had to set the software up from scratch...even after years of use! Our technical support is very good, but unfortunately we cannot do much in these situations but feel your pain. We have also helped those who did make backups (external backups) and had computer crashes. Once they got their new computer, within 20 minutes they are backup and running. Save yourself headaches and lots of valuable time and please... backup your software.

Assign ezFramer to Use the Backup Program

You must first tell ezFramer you want to use the Backup Feature before you can backup your data. This is a one time process, once it is set you will not need to do this again.

1. From inside ezFramer, click on File then Preferences – Setup Guide.
2. Click on the Backup Tab at the far right.



3. Click the Browse Button.



4. In the window which appears select the file named "backerv6.exe". If the file is not listed you need to download it off the internet. To do this, simply click on the Help menu and select Download Backup Program. When finished installing, you can now go back into the Setup Guide and assign the file.



5. Click Open and you will see the path defined in the Backup Tab window.

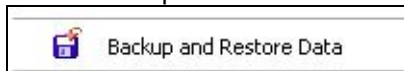


6. Click Save & Exit (you will be prompted to restart ezFramer).

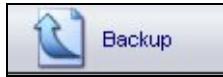
Back Up ezFramer Data

NOTE: Some programs will remove a required file from your ezFramer program directory which can cause a message to appear stating, "Missing zlib.dll not found" when you first start your backup program. Simply go to our website and visit the Support Page where you can download and install this file at no cost. Backups are critical, and we provide this feature for everyone.

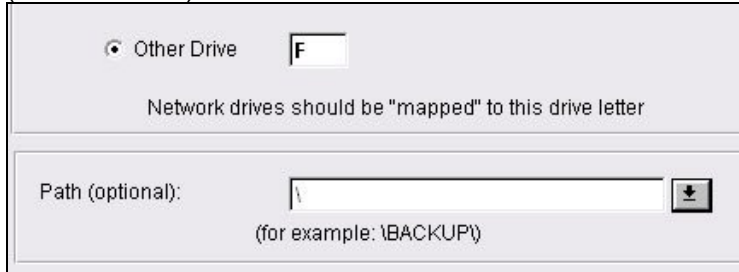
1. From inside ezFramer, click on File.
2. Select Backup and Restore Data.



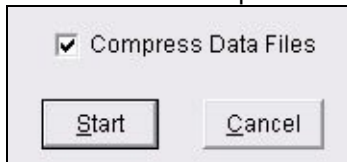
3. In the window which opens, click the Backup button.



4. Select a drive to back up to. Click A for backing up to a floppy. Select C to backup to your C drive or enter a different drive letter if you want to backup to an external media (recommended).



5. NOTE: The default location for your backup file is in the nuTech (Express folder if using Express) folder under Program Files on your local disk C. If you want to backup to another location, use the little black arrow at the end of the Path field. Locate the location and click Ok. The location of your backup will be displayed in the Path.
6. Make sure the Compress Data Files checkbox is checked.



7. Click the Start button.
8. Click Continue button in the window which appears.



9. When it is finished backing up click OK.



10. The name of the ezFramer backup file is 1.bkp and will be saved in the path you set in step 4.
11. You can exit the backup program at this point by clicking the Exit button at the top right.



12. By default each time you run a backup, it will also close down ezFramer. Simply re-open ezFramer to continue with your orders. It is also highly recommended to save external copies of your backup file should a problem occur to your actual computer.
13. NOTE: Our recommendation is to use a removable storage devise such as a thumb drive/memory stick which plugs right into you USB port. This USB port is then assigned a drive letter, and you can backup directly to the thumb drive.

Save the ezFramer Backup File to CD

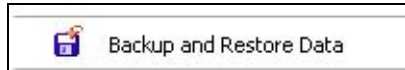
It is not possible to backup your ezFramer program directly to a CD. You must use a CD burning software to do this.

1. Save your backup file to your computer using the steps above (make sure to note where you are saving it)
2. Use your CD burning software to copy the 1.bkp file to your CD. Make sure it is a writable CD.
3. NOTE: There are pro's and con's to using Rewritable vs. Writable. If you use Rewritable CD you can reuse the same CD, but your current backup will always overwrite the previous back up file. If you choose writable, then you will need to use a new CD for each time you create a backup file.
4. Our recommendation is to use a removable storage devise such as a thumb drive/memory stick which plugs right into you USB port. This USB port is then assigned a drive letter, and you can backup directly to the thumb drive.

Restore a Backup File

Restoring an ezFramer Backup file will overwrite any pre-existing data. Make sure you are restore using the most recent backup.

1. From inside the new ezFramer click File – Backup & Restore Data.



2. In the Back up and Restore window click the Restore Data Icon along the top toolbar
****Make sure to click RESTORE****



3. In the Restore From tab select the drive where the back up file is located.
4. In the Path to Restore From field, locate the folder/location where your back up file resides by clicking the arrow button to the right.



5. In the Restore To tab, make sure the setting is set to Original Path.
6. Click Start. This will over-write any and all previous information in your existing ezFramer.